

SFTP: Connect to **echo.chem.umn.edu**, using port **22**, with your username and password

If you get a message about a security key, say “yes” that it is a trusted connection.

Once you have connected, there will be a place where you can enter a remote path or open a directory to access your files. The following are some examples.

Note: for data of old users, connect to port **722**

### On all platforms using Firefox:

Download the FireFTP add-on. Enable toolbars in your browser.

In the toolbar, select: Tools – Web Developer – FireFTP.

Quick connect

Main tab: echo.chem.umn.edu

    Login, password

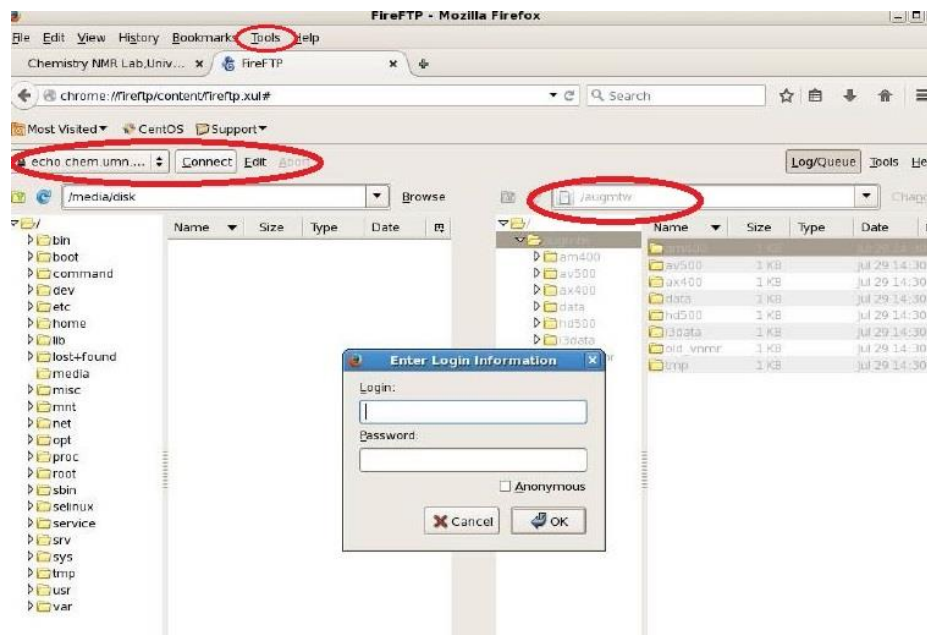
Connection tab:

    Security: SFTP

    Port: 22

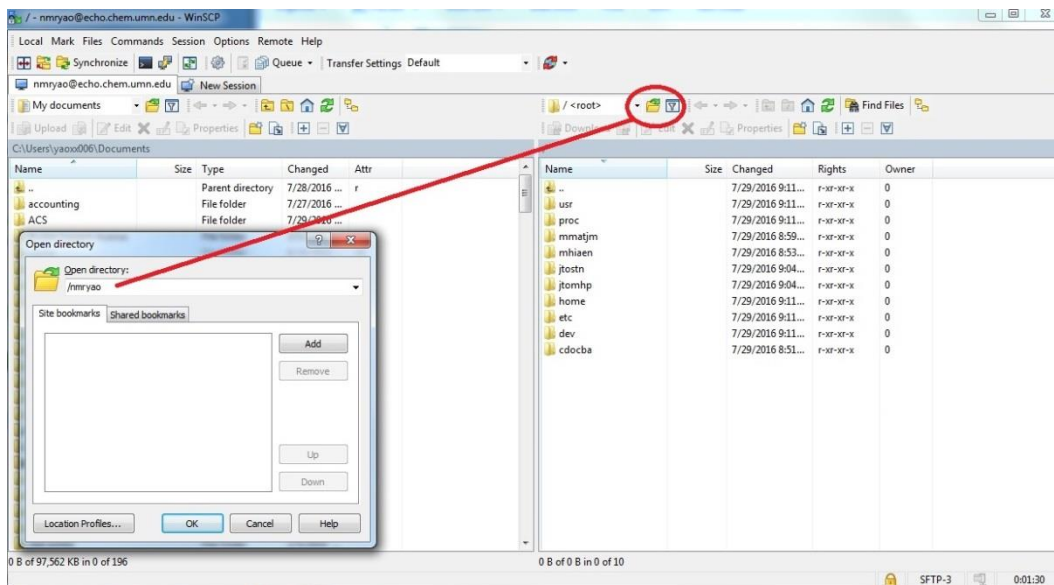
    Initial directory (remote): /username

[Connect]



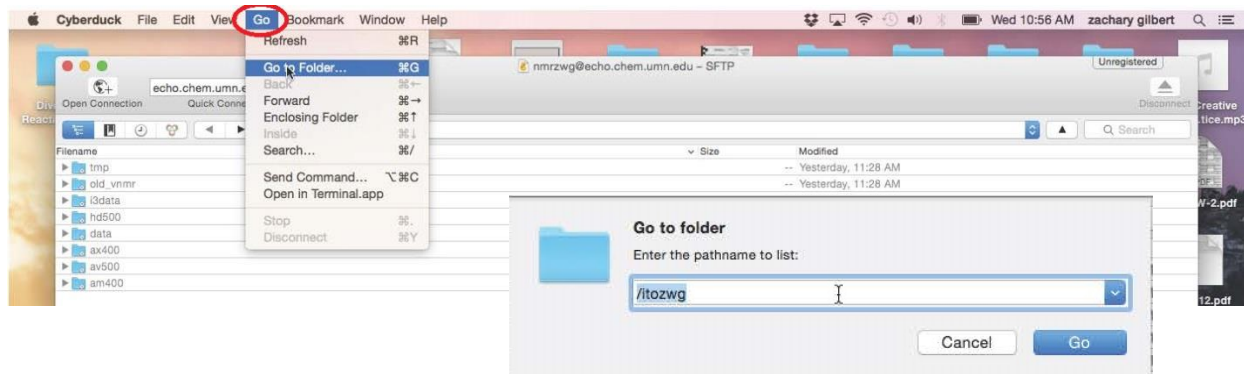
### On a PC:

With WinSCP (or FlashFTP), after connecting, select the folder icon next to the /root directory and enter your username in the new window. See screenshot of WinSCP below:



### On a Mac with cyberduck, after connecting,

In the Finder menu (at the very top of your screen, not in the little cyberduck program window), select "Go" then "go to folder" and enter your username.



### On a Mac with filezilla, after connecting,

Above the directories you see, there is a window with "/", type in your username after the slash. Make sure your transfer protocol is set to binary, NOT automatic or ASCII.

### On a Mac with transmit:

Select the sftp tab, and then fill in the info (server, username, password) as well as your username in the box labeled initial path.