

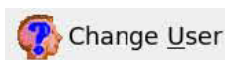
# ICONNMR

Type **icon** in Topspin command line.

Select the following button.

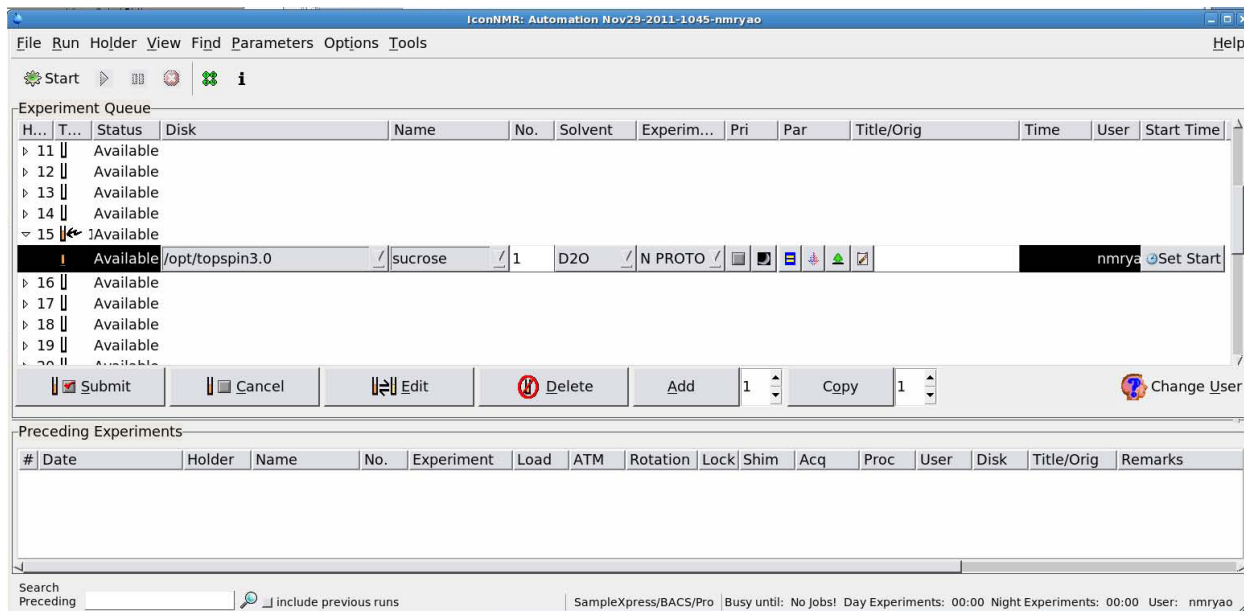



Select your username and enter your password.

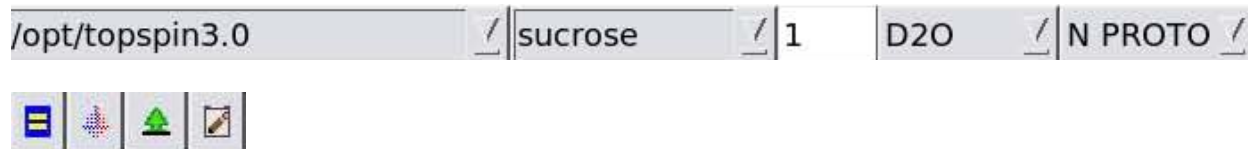


If iconnmr is already open, select , then select your username and enter password.

A new window will open. Select your sample number from the list. In the screenshot below, sample holder 15 is selected.



Use the pulldown menus  to enter data directory, name (or one of the default options), experiment number (should default to 10), solvent, and experiment (see below).





Change parameters. Will change to  when parameters have been changed.



Lock/shim manually. To shim on non-deuterated samples, choose lockprogram: LOCK-OFF;  
#Switch sweep + lock

Under shim program, enter: **TOPSHIM lockoff 1h o1p=#**

where # = chemical shift of the solvent in ppm

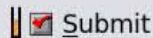


Default is to print. Select the printer icon and it will change to a tree and it won't print.

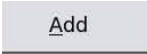


Enter title

Click



when you have finished setting up the desired experiment. The status will show the experiment as "Queued".

To add additional experiments to the same sample, click  and repeat. The experiment number should increment to 11, 12, etc., and the title is the same as the first entry unless you change it.

If you have several samples and want to run the same experiment on all of them, select

 Copy

1

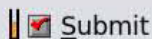


and change the number to the number of additional samples. Then

 Edit

appropriate parameters (like title).

Make sure you



all samples to the queue.

Automation begins when

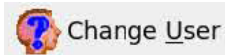


is selected. Automation can be halted by selecting



Note: stopping automation can only be performed by the user who started ICON.

When finished, select



, so the next user has to log in.

Or simply exit the program and say No to all the dialog boxes.